

Report nr. 6 - LCI Service Project 2005-07 - from LC18 Svendborg, June 2007

## **LCI Service Project 2005-07: A children's home in Kathmandu, Nepal**

Together we are strong: Life Will Never Be The Same Again

*Written by Lene Hoeffner, LC18 Svendborg Denmark,  
on behalf of the LCI Service Project's Steering Group (2005-2007);  
Lilly Jeppesen, Elly Nissen Petersen and Lene Hoeffner*

### **Since February 2007**

We wrote our last 5. Report in February 2007 since that lots of things has happened at the LCI Charity Project 2005-2007; A Children's Home in Kathmandu, Nepal.

And we are so happy now to share all this with all of you. We already now can state, that this project is a not only a big, but a huge success for all of us Circlers all over the world. We all together made this happen. Now, listen what we have to tell you...

### **We did it!**

The 1<sup>st</sup> of December 2006 the 30 constructions workers started to build the new house for the Children's Home, witch us as Circlers have supported the last two years.

*Photos 1-4: March-April 2007, from the building of the new children's home in Kathmandu, Nepal.*



The plan was to finish the house latest at the 30th of June 2007.

The work went very well right from the beginning and three weeks before deadline – the house was finished. Weee... we did it!

*Photos 5-7: And here it is – the house almost finished. Kaji wrote in his mail: It is very nice and beautiful. We can only agree with him.*



Next week Kaji from the children's home and the engineer together will go through the building before the last payment will

be released. And we do have all the money also for this last payment. Circlers you did so well!

Kaji has sent us a fax some days ago; he is very happy about the house "It looks very nice and very beautiful" he wrote. "I'm very happy – thank's for all Ladies Circle – Namesté"

### **Danish Ladies in Nepal in April**

As we also could tell you in the 5. report – Elly and Lilly from the Danish Steering Group was visiting Nepal and this LCI Project in the springtime this year.

They had a good dialog with the Ladies from LC Katmandu 1, about the ownership of the children's home and the fond.

Both we and the Danish President of LC have afterwards had a correspondence with the Nepal Ladies, and they were at that time unable to take the ownership for the fond, course of technical problems. We are still working on it and hope that the Nepal Ladies can give us a helpful suggests what to do.

*Photo's 8-11: The Danish Ladies together with Ladies from LC Katmandu 1. April 2007.*





It is the plan right now that Lene from the Danish Steering group will travel to Nepal in the Autumn this year.

### **The practical details**

During the building process Vibeke and Kaji was working on all the practical details. And as you can imagine, there is a lot to do. When is the right time to move to the house? What about the school? - And the new road for the children to walk to the school? And much more...



### **School shift in May**

The children had a need for a better and more supporting teaching, as they could have at there old school.

Vibeke has made a new budget. After the children's home will have there own house from LCI – she can save the monthly rent – and there now is room to use some of there saved money to pay a bit more for a school who can give the children exactly the teaching witch these children needs. Remember it is children from an area where school and books are absolutely no part of daily life.

So Karna, the teacher from the children's home, has found a school that can fulfil these special needs.

In May it is time in Nepal, if you have to make a school shift – so in May all the children started at the new school.

*Photo's 12+13: Children from the children's home.*



### **From Children's home to school**

The new house is in the country side of Kathmandu. So from the new house and to the new school there is a long – to long – way, for the children to walk.

Even the new school is closer to the children's home, than the old school was.

### **“Two-in-one-deal”**

Why do we tell you all this? We do because; we now had the possibility to make a “two-in-one-deal”.

The new school is so much better for the children – but of course the children have



to work more to do more homework's than before.

So we made the conclusion that, it was a good calculation to reward the children. We made a deal and it is: You do more homework – and we will get a bus to drive you to school.

Instead of the children have to walk almost 1,5 hour to school and again 1,5 hour back home again – we have bought a used bus for them, so they don't need to use that much time on walking – but now they can use the time better – doing homework.

### **One more thing about that ...**

You may ask you self: "Bought a bus? Yes, but from where did you get the money for it?" And the answer is: "From you, dear Circlers". Yes, we have together collected that amount of money so we also could buy a used bus. Weeee – we! did that.

### **We had to rewrite the goals**

With this calculation we had to rewrite our goals. We all the time wanted to go for a teenage house after the main new children's home – and we had from the beginning no thoughts on buying a bus at all. But things are changing – and we had to look at the facts.

The fact was that it would have been more long-winded not to buy the bus. It would have meant that Vibeke had to collect the money for the bus her self – before moving to the house. And we of course wanted her and the children to move to the new nice and beautiful house as soon as possible.

### **The new goals are:**

1. to buy a place to build a house in Kathmandu, Nepal
2. to build a house, a home – to the children at this Children's Home
3. Buy a used school bus
4. Perhaps build another floor on the children's home or a teenage house.

### **The economic objectives**

To fulfil our goal, we need to collect the following:

1. About 150.000 DKK to the ground for the home (= fact: 19,295 €)
2. About 400.000 DKK to build the house (fact: 62,750 €)
3. About 120.000 DKK for a school bus (= fact 16.000 €)
4. About 150.000 DKK to build another floor or a teenage house (fact: 18.000 €)

### **The time schedule for the objectives**

The time schedule is:

1. End of 2005
2. Start in the beginning of 2006 (fact: December 2006) – finish it latest 30.06.07 (fact: 08.06.07)
3. Buying a used school bus, as soon as possible
4. Start as soon as possible – 15<sup>th</sup> of June. Finish latest 30.09.07 or 30.10.07 it will depend of the rain, the monsum.

### **Payments in total**

We bought in October 2005 a piece of land in Kathmandu, Nepal: price 19,295€.

The Paying Rates for the Service Project, building a Children's home was:

1. 1<sup>st</sup> December 2006 – 12,250 €
2. 1<sup>st</sup> January 2007 – 18,800 €
3. 1<sup>st</sup> February 2007 – 12,250 €
4. 1<sup>st</sup> March 2007 – 12,250 €
5. 30<sup>th</sup> June 2007 – 7,200 €

All this is paid, the last rate will be paid in the following week 25/26-2007 (we have the money).

The price of the used bus was; 16.000 €. And it is paid as well.

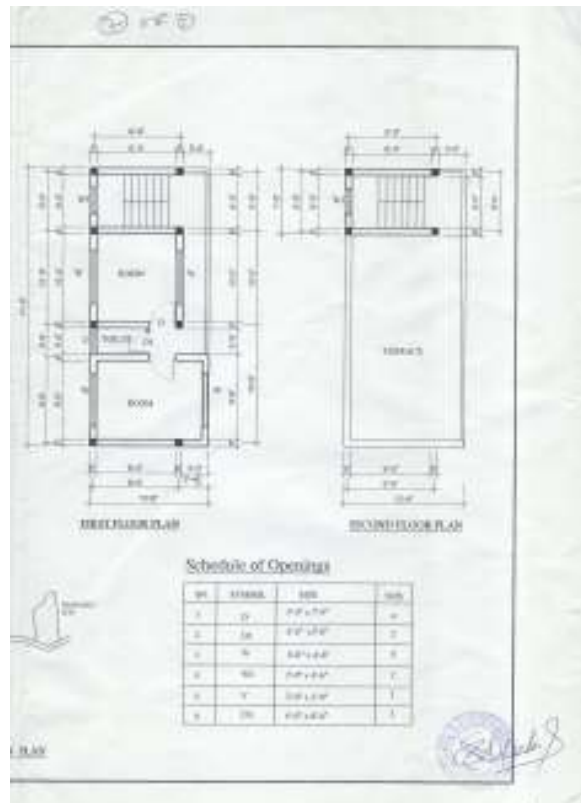
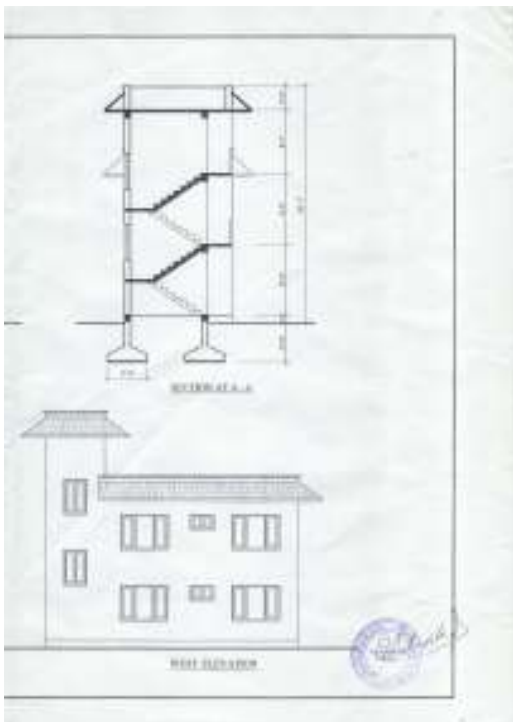
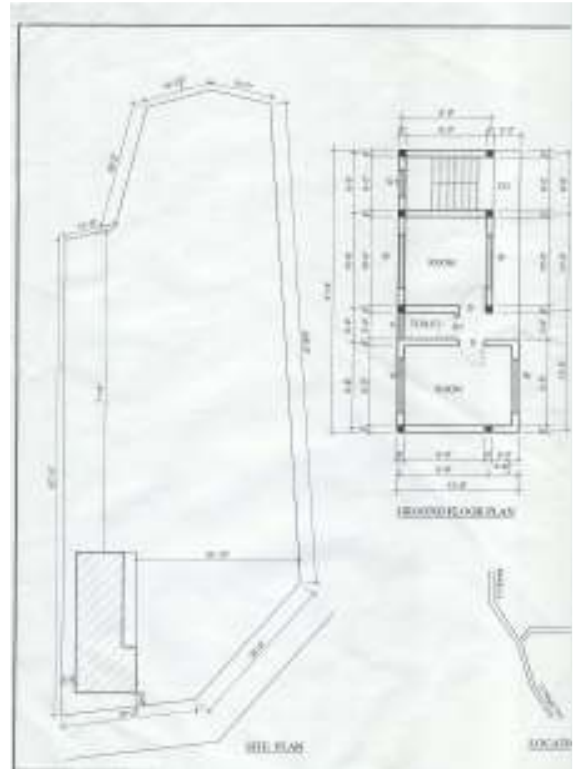
### **Just one more thing...**

Vibeke was extraordinary in Nepal in springtime this year, because of building

the new children's home (as told you in repost no. 5/Feb. 2007). We asked her to get drawings for a teenage house made. And she did.

We were optimistic and were thinking: *IF* we get money enough to build a teenage house we have to be prepared.

*Drawings, 1-4 of the teenage house.*



**And ladies what has happened?**

At this time, we – the steering group - do have become more than half of the money to the teenage house. So we have sent an

email to you - the LCI board – asking for your accept to start building the house even it can not be finished before the 30<sup>th</sup> of June.

And we are still optimistic. And do still believe that the Circlers from our big LC world will come in with the last amount of money, during June 2007. We are very happy to get the email today from the LCI treasure, who let us know there is more money for this project – and it seems to be exactly the money for the teenage house – jubii..... – we are so happy!

We have been working days and nights and have now got a right price for the teenage house and a time schedule. It looks like this:

Price for the teenage house: 18.000 €

Time schedule: The teenage house will be finished latest at the 30<sup>th</sup> of October 2007. We hope that we can be finished at the 30<sup>th</sup> of September – but it will depend on the rain; the monsum.

The payments are like this:

1. 20<sup>th</sup> of June 2007 – 6,500 €
2. 20<sup>th</sup> of July 2007 – 6,500 €
3. 30<sup>th</sup> of Sep. or Oct. 2007 – 5,000 €

We do have all the financial papers

collected with our financial report.

### **We started with 20 children**

At this project LCI can not only built a main children's home, bought a used bus and a teenage house – but also created space and economy for in total 18 more children (10 more children in the main children's home and 8 more children in the teenage house) – then, from the presentation in Island in September 2005, where there was 20 children at this children's home.

### **Used stamps**

In the last many weeks Lene has become used stamps from all over the world – from east to west and north to south. **This shows us, that: Together we are strong! And: we – Circlers, from all over the world - really want to make a different for those who need it more than we do our self. This is special. Thank you so much, to EVERYBODY. We are proud of being Ladies Circlers.**

### **Life Will Never Be The Same Again!**

On behalf of  
The LCI Service Project  
2005-2007  
LC 18 Svendborg  
Elly – Lilly og Lene



*Today there are 23 children at this children's home. Hereby you can see Vibeke and all the children. Photo; April 2007.*